



Axis

Marcus Moss
Sales Associate
(801) 660-0914

Janie Mathis
New Home Specialist
(801) 456-2476

The Turner II - 2 Bed | 2.5 Bath | 2 – Car Garage | 1,559 Total SF



The Turner is a home with the perfect space for entertaining. Featuring a spacious entry, a large living room with balcony, dining and spacious kitchen. The generous kitchen island offers plenty of counter space and ample storage. Upstairs, enjoy the primary suite with two closets for plenty of clothing space and a private bath with dual sinks. A well-sized secondary bedroom with private bathroom and hall laundry completes this home. A design that maximizes space and natural light make this delightful townhome hard to forget.

*Floorplans and renderings are conceptual drawings and may vary from actual plans and homes as built. Options and features may not be available on all homes and are subject to change without notice. Dimensions are approximate. Actual homes may vary from photos and/or drawings which may show upgrades and may not represent the lowest-priced homes in the community. 2/01/24



garbetthomes.com

(801) 396-9882



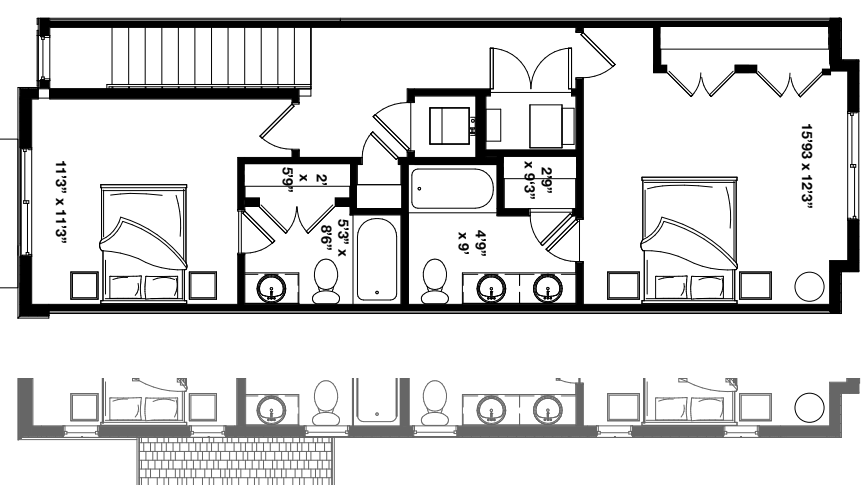
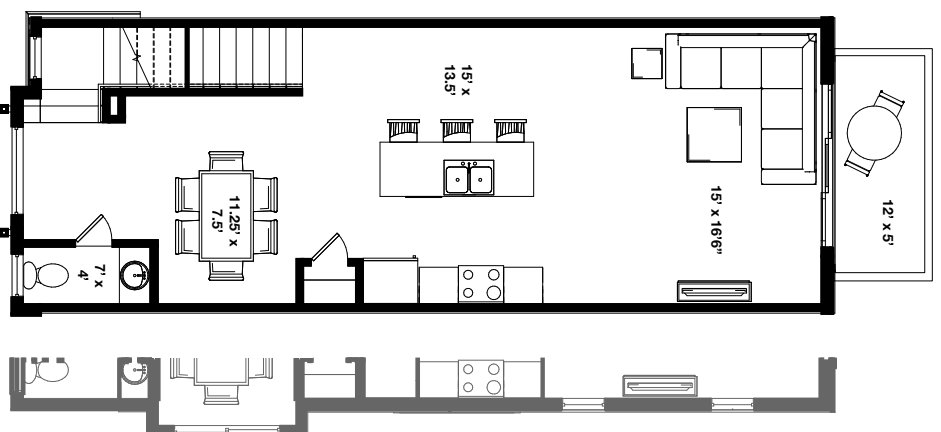
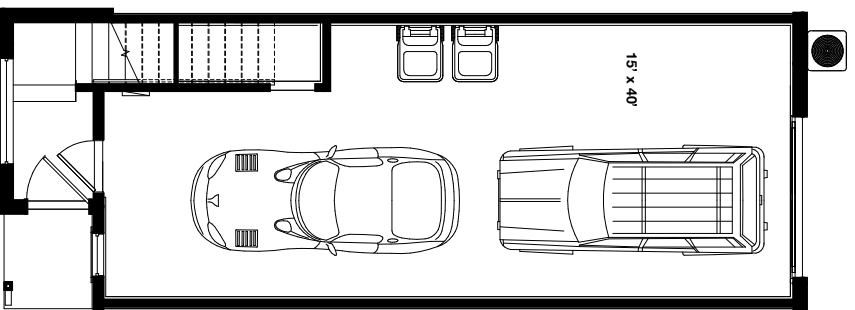


Axis

Marcus Moss
Sales Associate
(801) 660-0914

Janie Mathis
New Home Specialist
(801) 456-2476

The Turner II - 2 Bed | 2.5 Bath | 2 - Car Garage | 1,559 Total SF



*Floorplans and renderings are conceptual drawings and may vary from actual plans and homes as built. Options and features may not be available on all homes and are subject to change without notice. Dimensions are approximate. Actual homes may vary from photos and/or drawings which may show upgrades and may not represent the lowest-priced homes in the community. 2/01/24