



# The Mill *Gomez*

3 Bed | 2.5 Bath | 2-Car Garage | 2,598 Total SF | 1,777 Finished SF

*Elevation 1*



*Elevation 2*



*Elevation 3*



The Gomez is designed to delight! A wide entry and two-story volume ceiling greet you offering a glimpse at this homes open concept. The space continues with kitchen, featuring walk-in pantry, flowing into the dining area and great room. An accommodating mudroom/drop zone with half bath complete the first floor. Upstairs, unwind in a spacious master suite with private bath, walk-in closet and convenient access to the hall laundry room. An additional bath, two more bedrooms and optional loft offer a dynamic floor plan for growth.

\*Floorplans and renderings are conceptual drawings and may vary from actual plans and homes as built. Options and features may not be available on all homes and are subject to change without notice. Dimensions are approximate. Actual homes may vary from photos and/or drawings which may show upgrades and may not represent the lowest-priced homes in the community. 05/12/2025



[garbetthomes.com](http://garbetthomes.com)

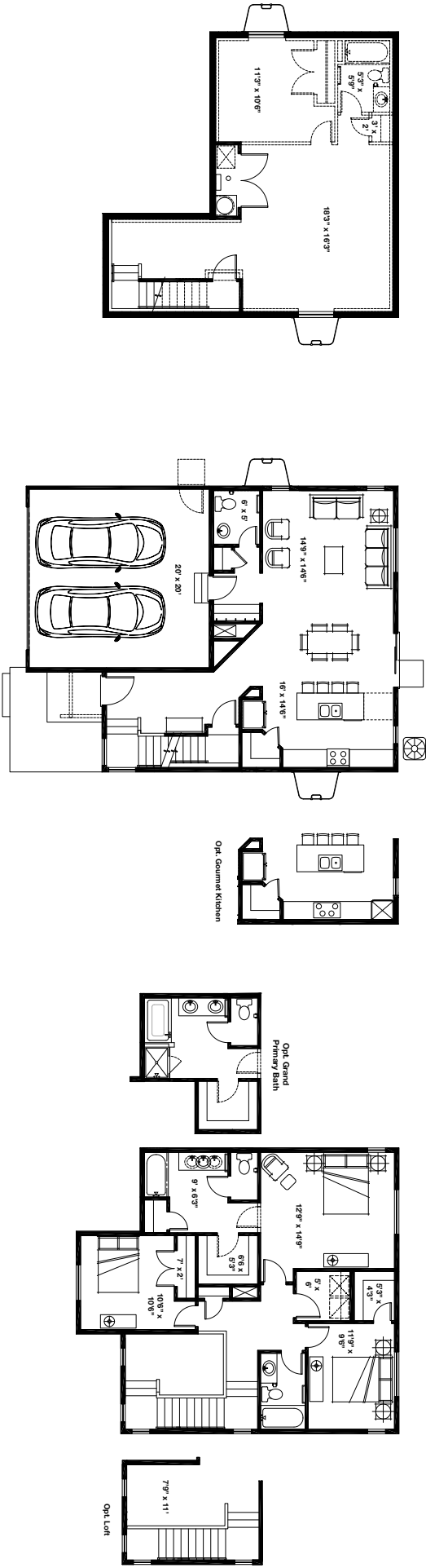
(801) 396-9882





# The Mill Gomez

3 Bed | 2.5 Bath | 2-Car Garage | 2,598 Total SF | 1,777 Finished SF



\*Floorplans and renderings are conceptual drawings and may vary from actual plans and homes as built. Options and features may not be available on all homes and are subject to change without notice. Dimensions are approximate. Actual homes may vary from photos and/or drawings which may show upgrades and may not represent the lowest-priced homes in the community. 05/12/2025