



Bishop Place

Lisa Spencer
Sales Associate
(385) 549-3110

Janie Mathis
New Home Specialist
(801) 456-2476

The Saville - 2 Bed | 1.5 Bath | 1 Car Garage | 1,450 SF



Offering three-stories worth of well thought out space the Saville is obtainable luxury. A second-floor grand room with walk-in pantry and kitchen will become the heart of your home. While the third floor will be your private retreat when the hustle and bustle of the city becomes too much. Finished off by the first-floor's flex room that can become whatever you need. You have found your everyday paradise!

*Floorplans and renderings are conceptual drawings and may vary from actual plans and homes as built. Options and features may not be available on all homes and are subject to change without notice. Dimensions are approximate. Actual homes may vary from photos and/or drawings which may show upgrades and may not represent the lowest-priced homes in the community. 5/09/2025



garbetthomes.com

(801) 396-9882



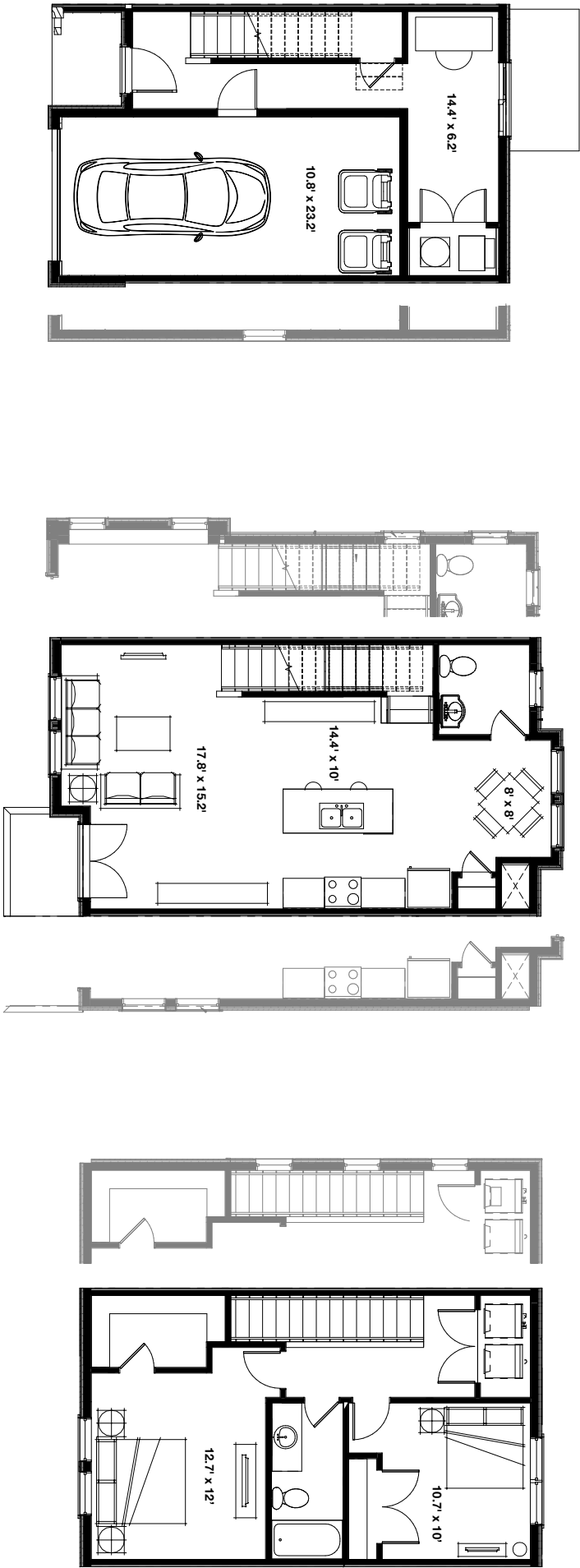


Bishop Place

Lisa Spencer
Sales Associate
(385) 549-3110

Janie Mathis
New Home Specialist
(801) 456-2476

The Saville - 2 Bed | 1.5 Bath | 1 Car Garage | 1,450 SF



*Floorplans and renderings are conceptual drawings and may vary from actual plans and homes as built. Options and features may not be available on all homes and are subject to change without notice. Dimensions are approximate. Actual homes may vary from photos and/or drawings which may show upgrades and may not represent the lowest-priced homes in the community. 5/09/2025