



Spring Creek Cove *Bellows Alt.*

SF 3,799 | 3 Bedrooms | 2 Bathrooms | 2 Car Garage | Sub-Basement

Elevation A



Elevation B



Elevation C



The Bellows welcomes guests with its grand entryway and wide hall leading to the spacious great room. This open concept home was designed with the most discerning buyer in mind. The bright, gourmet kitchen provides a large island, eat in area and an abundance of windows. This home is perfect for entertaining or enjoying an evening at home with a good book. Personalize the Bellows to better suit your needs by turning the flex space into an office, bedroom, nursery, studio or formal living room.

*Floorplans and renderings are conceptual drawings and may vary from actual plans and homes as built. Options and features may not be available on all homes and are subject to change without notice. Dimensions are approximate. Actual homes may vary from photos and/or drawings which may show upgrades and may not represent the lowest-priced homes in the community. 7/7/20



garbetthomes.com

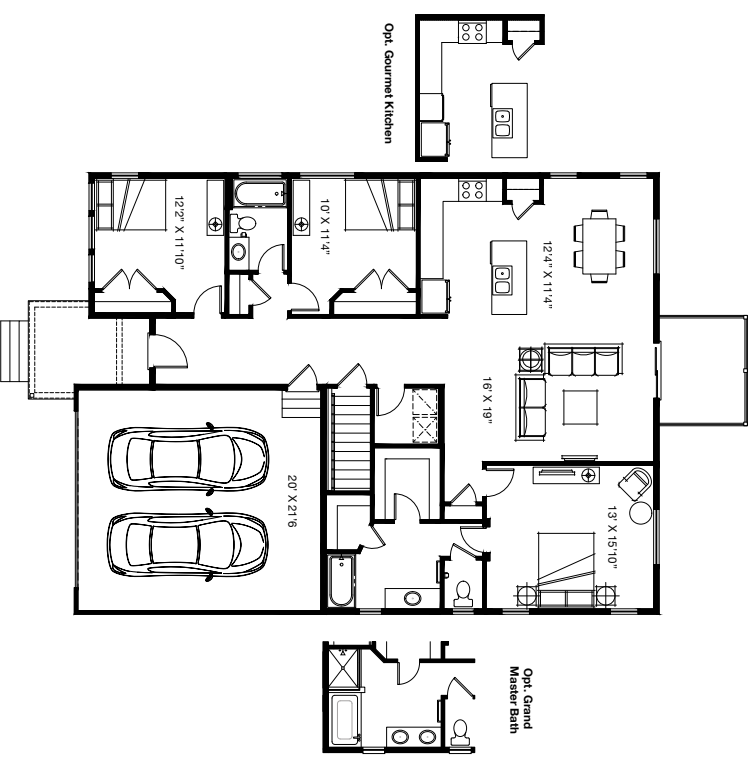
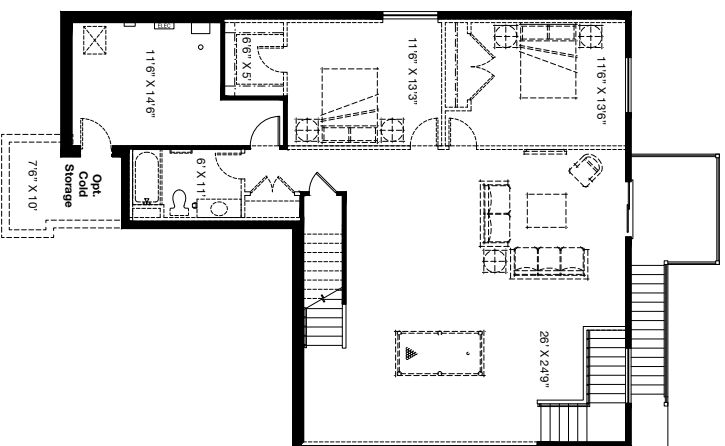
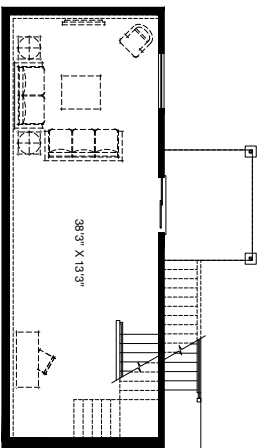
801 396-9882





Spring Creek Cove Bellows Alt.

SF 3,799 | 3 Bedrooms | 2 Bathrooms | 2 Car Garage | Sub-Basement



*Floorplans and renderings are conceptual drawings and may vary from actual plans and homes as built. Options and features may not be available on all homes and are subject to change without notice. Dimensions are approximate. Actual homes may vary from photos and/or drawings which may show upgrades and may not represent the lowest-priced homes in the community. 777/20