



# Bishop Place

Lisa Spencer  
Sales Associate  
(385) 549-3110

Janie Mathis  
New Home Specialist  
(801) 456-2476

## The Montgomery - 2 Bed | 2 Bath | 2 Car Garage | 1,423 SF



The Montgomery is a modern classic that is sure to delight! Upon entering you can immediately step into tranquility thanks to a ground floor bedroom that could also function as an office, study, or secret mancave. While the second floor's spacious living room and well-appointed kitchen create an entertaining oasis for your guests. A discrete laundry room, airy primary suite offering a full bath and walk-in closet complete this pleasant home.

\*Floorplans and renderings are conceptual drawings and may vary from actual plans and homes as built. Options and features may not be available on all homes and are subject to change without notice. Dimensions are approximate. Actual homes may vary from photos and/or drawings which may show upgrades and may not represent the lowest-priced homes in the community. 4/25/24



[garbetthomes.com](http://garbetthomes.com)

(801) 396-9882



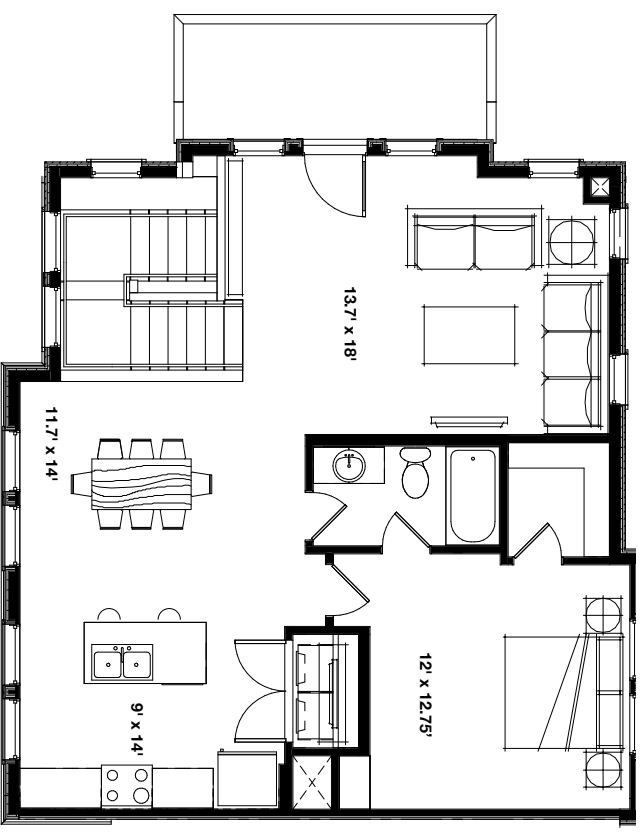
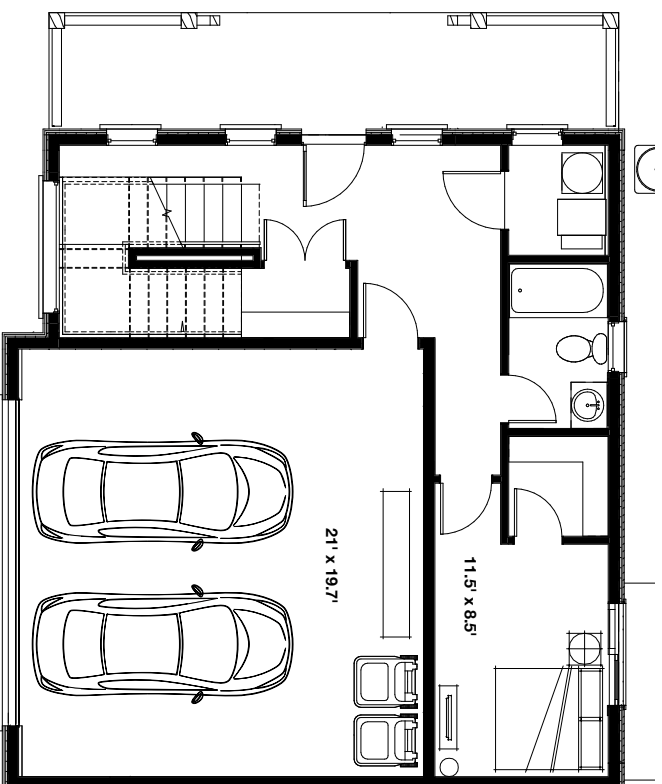


# Bishop Place

**Lisa Spencer**  
Sales Associate  
(385) 549-3110

**Janie Mathis**  
New Home Specialist  
(801) 456-2476

The Montgomery - 2 Bed | 2 Bath | 2 Car Garage | 1,423 SF



\*Floorplans and renderings are conceptual drawings and may vary from actual plans and homes as built. Options and features may not be available on all homes and are subject to change without notice. Dimensions are approximate. Actual homes may vary from photos and/or drawings which may show upgrades and may not represent the lowest-priced homes in the community. 4/25/24