



# Axis

**Marcus Moss**  
Sales Associate  
(801) 660-0914

**Janie Mathis**  
New Home Specialist  
(801) 456-2476

## The Monet II - 2 bed | 2 bath | 2-car garage | 1,340 Total SF



Social butterflies will be hard-pressed to do better than The Monet. This three-story home offers everything you could need for a metropolitan life. The garage leads straight into a tranquil and welcoming entryway. The stairs lead to a second floor grand room perfectly balanced between structure and freedom to meet the needs of your day-to-day life. The third floor offers two bedrooms and bathrooms, allowing you enough space for your family or yourself and a guest. Do not miss out on this opportunity to live the metropolitan life of your dreams.

\*Floorplans and renderings are conceptual drawings and may vary from actual plans and homes as built. Options and features may not be available on all homes and are subject to change without notice. Dimensions are approximate. Actual homes may vary from photos and/or drawings which may show upgrades and may not represent the lowest-priced homes in the community. 4/17/24



[garbetthomes.com](http://garbetthomes.com)

(801) 396-9882



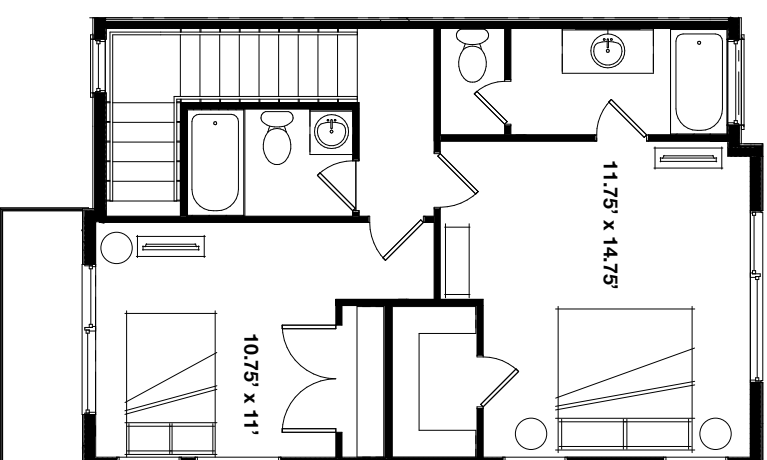
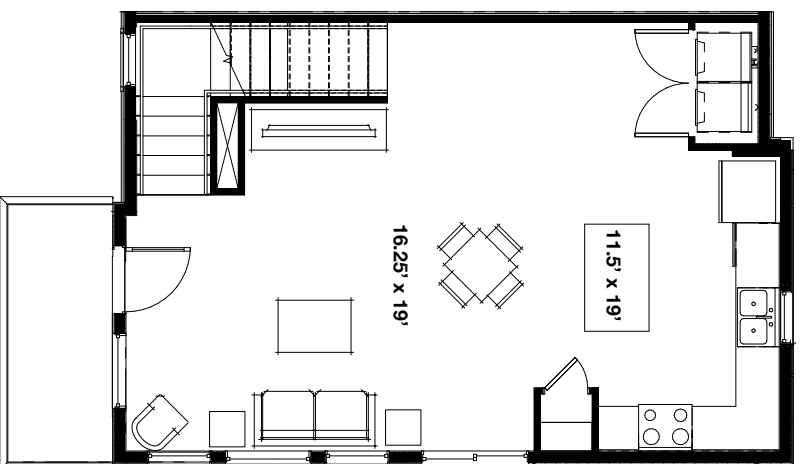
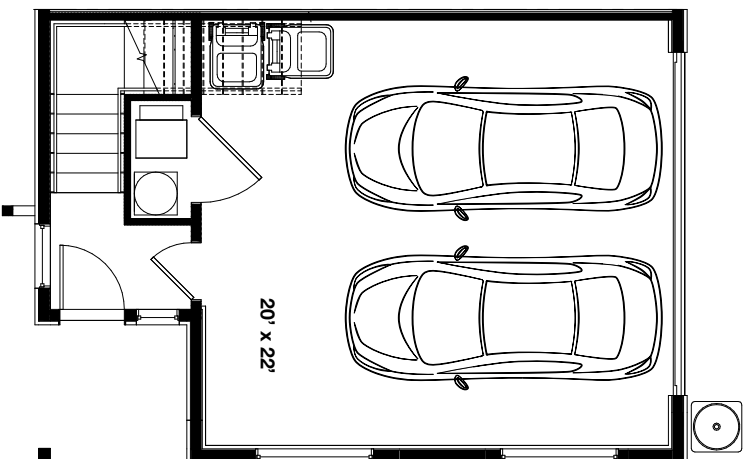


**Axis**

**Marcus Moss**  
Sales Associate  
(801) 660-0914

**Janie Mathis**  
New Home Specialist  
(801) 456-2476

**The Monet II - 2 bed | 2 bath | 2-car garage | 1,340 Total SF**



\*Floorplans and renderings are conceptual drawings and may vary from actual plans and homes as built. Options and features may not be available on all homes and are subject to change without notice. Dimensions are approximate. Actual homes may vary from photos and/or drawings which may show upgrades and may not represent the lowest-priced homes in the community. 4/17/24