



# Bishop Place

Lisa Spencer  
Sales Associate  
(385) 549-3110

Janie Mathis  
New Home Specialist  
(801) 456-2476

## The McEwen - 2 Bed | 2 Bath | 1 Car Garage | 1,234 SF



Who says townhomes require compromise? This delightful two-story townhome offers a fantastic layout that you can make yours. With a grand room that offers a walk-in pantry and kitchen, with more than enough space for entertaining. When your evening is done retire to the primary suite offering a walk-in closet, and private bath, allowing you to unwind in luxury. Rounded out by a main floor bedroom and under the stairs storage. The McEwen proves that you can have it all.

\*Floorplans and renderings are conceptual drawings and may vary from actual plans and homes as built. Options and features may not be available on all homes and are subject to change without notice. Dimensions are approximate. Actual homes may vary from photos and/or drawings which may show upgrades and may not represent the lowest-priced homes in the community. 5/02/24



[garbetthomes.com](http://garbetthomes.com)

(801) 396-9882



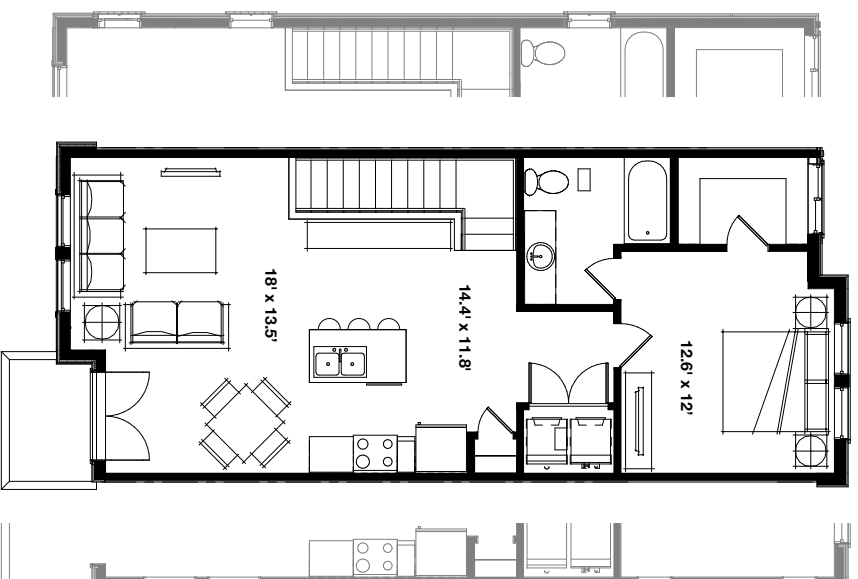
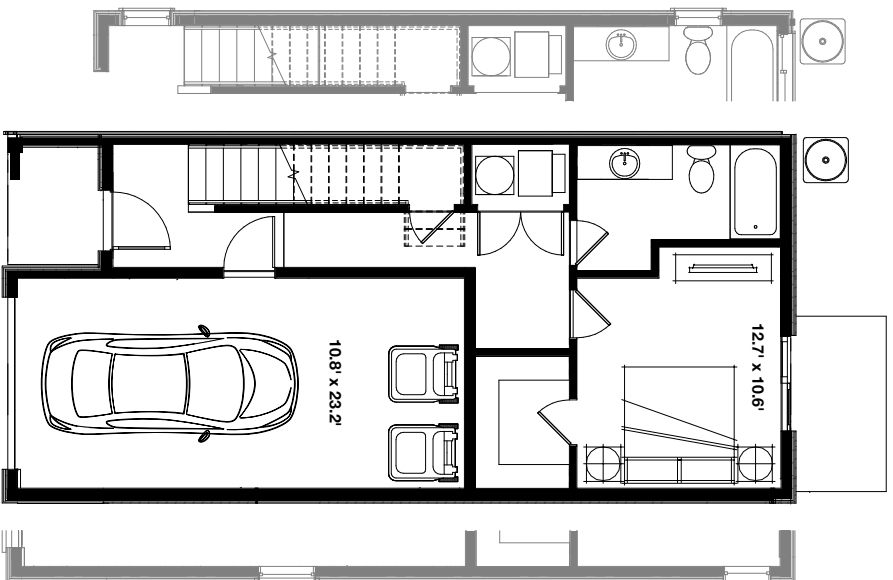


# Bishop Place

**Lisa Spencer**  
Sales Associate  
(385) 549-3110

**Janie Mathis**  
New Home Specialist  
(801) 456-2476

The McEwen - 2 Bed | 2 Bath | 1 Car Garage | 1,234 SF



\*Floorplans and renderings are conceptual drawings and may vary from actual plans and homes as built. Options and features may not be available on all homes and are subject to change without notice. Dimensions are approximate. Actual homes may vary from photos and/or drawings which may show upgrades and may not represent the lowest-priced homes in the community. 5/02/24