



Waterstone

The Matisse - 3 Bed | 2.5 Bath | 2-Car Garage
1,852 Finished SF | 2,736 Total SF

Elevation A



Elevation B



The Matisse plan knows how to deliver on space for everyone. Upon entering this home, the spacious foyer with private half bath and optional coat | mud area give plenty of space to receive guests while having a place to put things away. The open floorplan allows for plenty of space for whatever you could want with a great room, opening onto the kitchen, dining, and flex space. Upstairs offers a gracious laundry room, two secondary bedrooms and ample full bath. The primary suite makes the ultimate sanctuary with a large room, private primary bath, and generous walk-in closet anyone could enjoy filling.

*Floorplans and renderings are conceptual drawings and may vary from actual plans and homes as built. Options and features may not be available on all homes and are subject to change without notice. Dimensions are approximate. Actual homes may vary from photos and/or drawings which may show upgrades and may not represent the lowest-priced homes in the community. 05/12/2025



garbetthomes.com

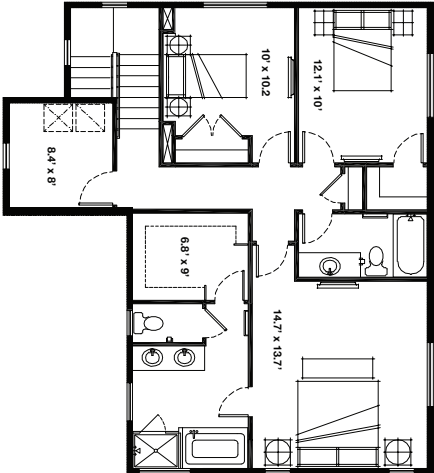
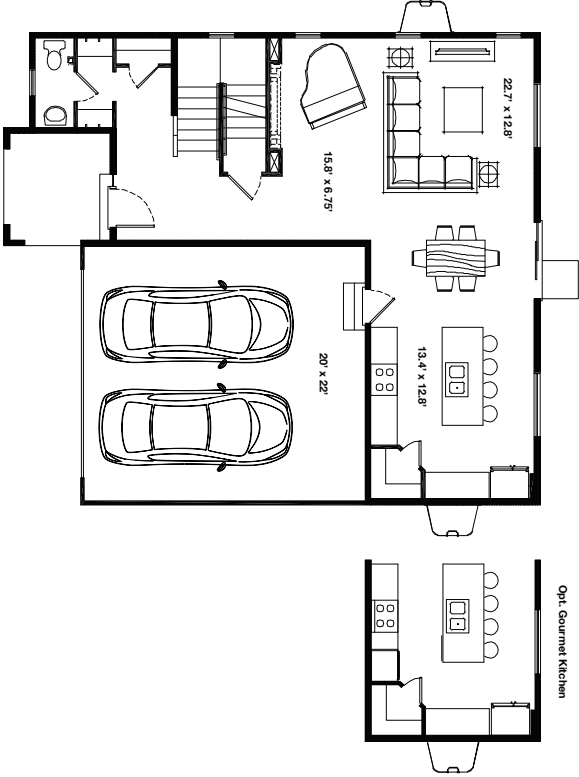
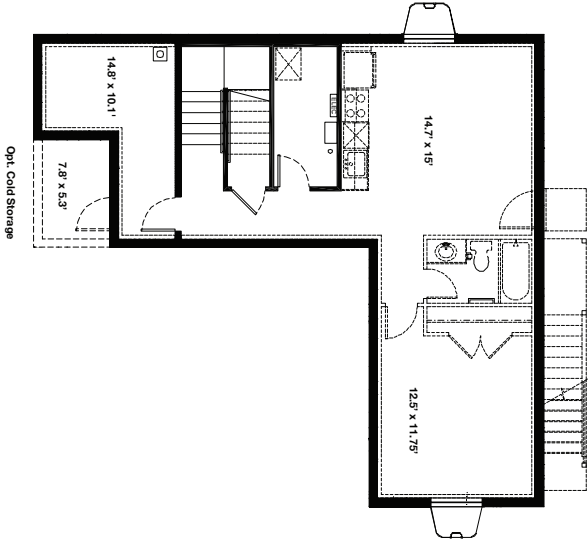
801 396-9882





Waterstone

The Matisse - 3 Bed | 2.5 Bath | 2-Car Garage
1,852 Finished SF | 2,736 Total SF



*Floorplans and renderings are conceptual drawings and may vary from actual plans and homes as built. Options and features may not be available on all homes and are subject to change without notice. Dimensions are approximate. Actual homes may vary from photos and/or drawings which may show upgrades and may not represent the lowest-priced homes in the community. 05/12/2025