



# Bishop Place

Lisa Spencer  
Sales Associate  
(385) 549-3110

Janie Mathis  
New Home Specialist  
(801) 456-2476

## The Holzer - 2 Bed | 2 Bath | 2 Car Garage | 1,432 SF



If home is where the heart is, the Holzer is sure to take it. Whether it's the memories you'll make in the open living room complete with a well-appointed kitchen. Or the private tranquility of the primary suite with walk-in bath. The second floor is primed to enrich your life. While a ground floor bedroom ensures that you have room to grow or can become an oasis of your own design and desire.

\*Floorplans and renderings are conceptual drawings and may vary from actual plans and homes as built. Options and features may not be available on all homes and are subject to change without notice. Dimensions are approximate. Actual homes may vary from photos and/or drawings which may show upgrades and may not represent the lowest-priced homes in the community. 4/29/24



garbetthomes.com

(801) 396-9882



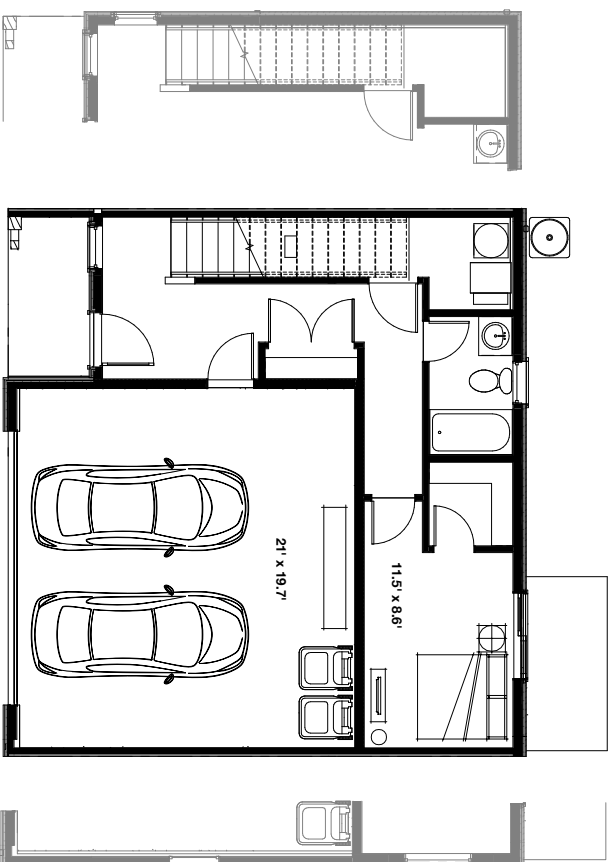


# Bishop Place

**Lisa Spencer**  
Sales Associate  
(385) 549-3110

**Janie Mathis**  
New Home Specialist  
(801) 456-2476

The Holzer - 2 Bed | 2 Bath | 2 Car Garage | 1,432 SF



Opt. Gourmet/Chef Kitchen

\*Floorplans and renderings are conceptual drawings and may vary from actual plans and homes as built. Options and features may not be available on all homes and are subject to change without notice. Dimensions are approximate. Actual homes may vary from photos and/or drawings which may show upgrades and may not represent the lowest-priced homes in the community. 4/29/24